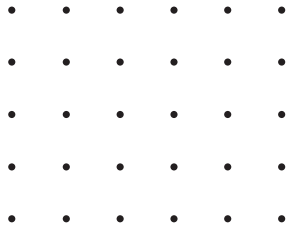


# ■ **COMPUTER WITH MONITOR :**



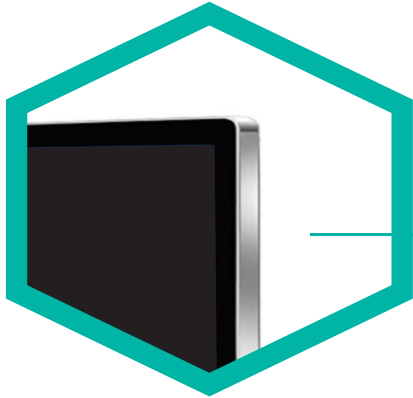
## Computer with Monitor

### MODEL-LBL/P-17

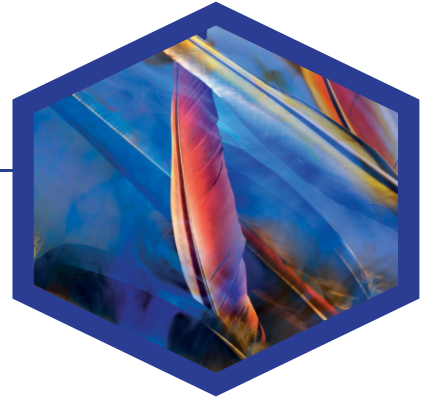
Our table is a large, immersive and interactive touch device that provides optimal touch interaction and visualization to further enhance the experience. It features a large 65" monitor with an electrical tilt function and a 4K screen, vastly improving the sense of interaction with the visualized data.



**Unique selling points**



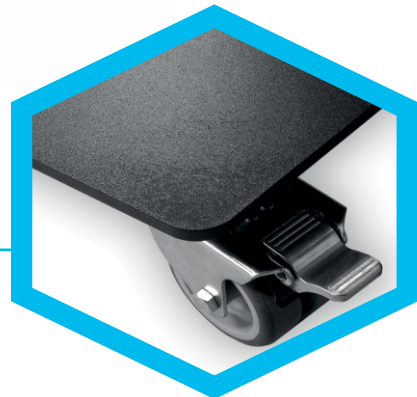
Hardened glass



Professional display  
for high contrast



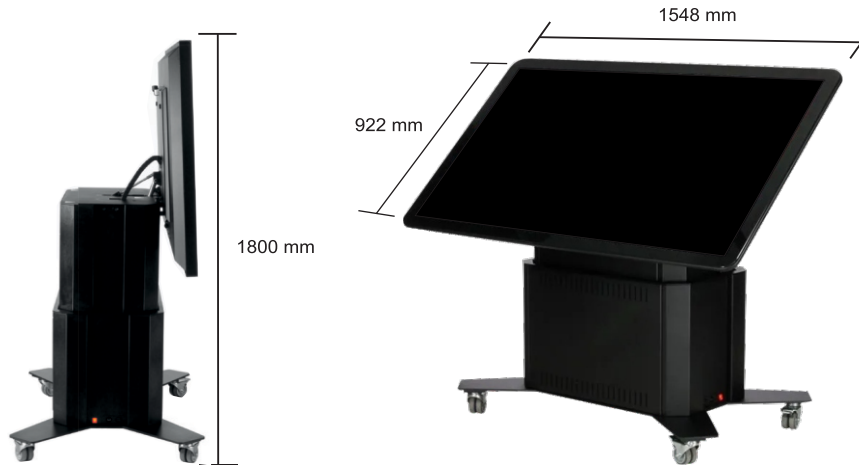
Easy acces to  
HDMI & USB Port



Mobile: Use it anywhere

## Technical Specifications

Our touch screen table tops features a modern design with edge-to-edge glass and very well designed metal enclosures. With capacitive multi-touch technology, the touch tables are easy and intuitive to use. Premium components, material and a great powder coating to finish. Professional display for high contrast.



### Features

- Electrically adjustable in a comfortable and ergonomic position
- Professional 65"(Diagonal) 4K Ultra HD screen
- Edge-to-Edge bezel free hardened glass
- Mobile: Use it anywhere
- All cables are concealed
- High performance PC

|                             |                                   |
|-----------------------------|-----------------------------------|
| Display                     | 65" Ultra HD 4K (3840x2160)       |
| Brightness                  | 600 nit                           |
| Glass                       | Hardened, clear                   |
| Computer                    | I7, 32gb RAM, 756gb Storage & GPU |
| Height adjustment           | Electrically, 390 mm / 15.35 in   |
| Tilt adjustment             | Electrically, 90 degrees          |
| Speakers                    | 20W (2x10W)                       |
| Color                       | Black                             |
| Connections                 | DVI-D, DisplayPort, 2x HDMI       |
| Dimensions (WxHxD - mm)     | 1548 x 1368 x 784 mm              |
| Dimensions (WxHxD - inches) | 60.94 x 53.86 x 30.87 in          |
| Packing                     | Flight case with ramp             |
| Partnumber                  | Model-LBL/P-17                    |